



# Do more with Your Devices

## Upgrade to Manager Advanced

Enhance device management and communication across the workplace with ViewSonic Manager Advanced. Building on the Basic plan, Advanced simplifies and improves company-wide information broadcasting with multimedia messages, presentations, live streams, and playlists. It also provides IT admins with extended management capabilities, including remote scheduling of ViewBoards and other device shutdowns, reducing workload and saving energy. Additionally, Advanced streamlines device optimization with enhanced monitoring and usage reports.

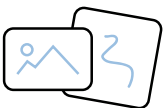
## Maximize Workplace Efficiency



### Conserve Energy

Save valuable man-hours and conserve energy in the office with job scheduling, automated power on/off, and ECO Mode for efficient device management.

- Job Scheduling
- Schedule Power On/Off
- Assign ECO Mode



### Remote Broadcasting

Enhance workplace announcements with multimedia broadcasts, playlist creation, and CAP integration for more impactful communication.

- Multimedia Broadcast
- Playlist Creation
- CAP Integration



### Device Performance

Conveniently monitor and manage ViewBoards and devices through web browser with remote desktop access, maintenance, and real-time usage reports, anytime, anywhere.

- Remote Desktop
- Remote Maintenance
- Real-time Usage Report



**Get Started with a Manager Advanced Free Trial:**  
<https://www.viewsonic.com/global/business/software/manager>



Explore  
 Manager Advanced

Specifications and availability are subject to change without notice. Corporate names and trademarks stated herein are the property of their respective companies. Copyright © 2023, ViewSonic Corporation. All rights reserved.