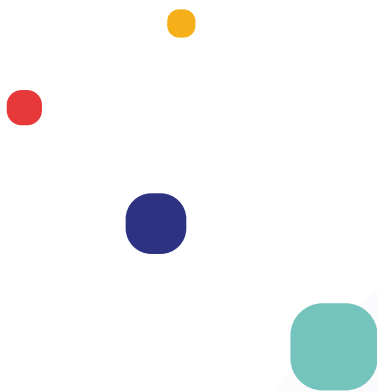
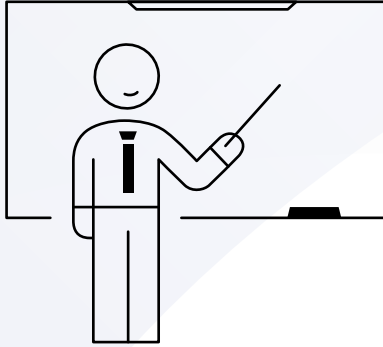


ViewBoard Pen Display

Designed To Deliver A Precise And
Natural Writing Experience Boosting
Classroom Learning

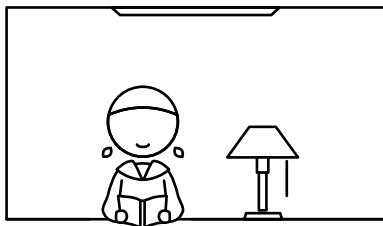


What We Offer



For Teacher

- Fluent Teaching Flow
- Deeper Engagement



For Student

- Creative Expression
- Immersive Learning

ViewBoard Pen Display

ID2456 Touch Monitor with MPP2.0 Active Pen



Expand your workspace with the ID2456, a 24" Full HD touch monitor designed to break free from the limitations of a mouse and give you the freedom of working with a pen in hand. The MPP2.0 active pen combines with PCAP technology and Palm Rejection to deliver pinpoint accuracy when writing or drawing.

*Additional stand for you to purchase

Product at a Glance

Pen Performance

- Compatible with MPP2.0 (Microsoft Pen Protocol)
- 4096 levels pen pressure
- $\pm 50^\circ$ pen tilt angle

Touch Function

- PCAP 10 fingers touch
- Palm rejection supports
- Control panel key to enable and disable touch function

Modern Connectivity

- Type-C
- 4K HDMI output

ViewBoard Pen Display

ID1330 ViewBoard® Pen Display

Ideal for a variety of education scenarios, the 13.3" ViewBoard Pen Display is equipped with an ultra-sensitive electromagnetic pen for a natural, realistic writing experience. Plug the portable display into another PC or interactive display, and share your scribbled ideas and masterpieces onto a bigger screen seamlessly.



Panel size:	13.3"
Pen resolution:	5,080 LPI
Active area:	11.6" x 6.5"
Pen pressure:	8,192 levels
Pen tilt detection:	±60° tilt

ID710 ViewBoard® Pen Display

Encourage student interaction in the classroom with this 7.5" Pen Display, the smallest of its kind. When paired with myViewBoard ecosystem, students can annotate, collaborate, and take notes on the device in real-time effortlessly. Perfect as a mini second screen, teachers can also use the ID710 as a visualization tool whilst presenting a lesson on another larger display.



Panel size:	7"
Pen resolution:	5,080 LPI
Active area:	6" x 3.38"
Pen Pressure:	8,192 levels
Pen tilt detection:	±60° tilt

PF0730-IOWW ViewBoard® Notepad

The lightweight 7.5" interactive writing pad reimagines the digital writing experience. It delivers the analog pleasure of writing and drawing on real paper, and simultaneously digitizing every single pen stroke accurately and precisely onto a plugged-in screen. Every single annotation made can be recreated, saved and shared in real-time - elevating every class into a collaboration hub. Also, there is an optional digitizer (EMP-022) which allows you draw or write on the pad.



Panel size:	7.5"
Pen resolution:	5,080 LPI
Active area:	6.4" x 4.0"
Pen Pressure:	4,096 levels
Pen tilt detection:	±60° tilt



*EMP-022 is optional,
not included in the box.

ViewStylus

ACP501 Active Stylus



ViewStylus ACP501 compatible with ViewSonic ViewBoard, iPad, and other capacitive touch screen devices. It allows you to do note taking, detailed writing, capturing ideas without any restrictions. ViewStylus ACP501 special technology empowers you enjoy natural pen-like feel. And our intuitive design makes it all easy. It's ready to use, no Bluetooth pairing or driver needed. All of the design are for letting you keep the fluent working flow.



Charge Interface:	Type-C USB connectivity
Charging Time:	About 1.5 hours
Power Saving:	Auto shutdown in 5 minutes when standby
Power Life:	Up to 11.5 hours to use
Length:	166mm
Diameter:	9mm
WEIGHT:	14g



ACP302-B1WW Active Stylus






By implementing the MPP (Microsoft Pen Protocol) technology, ViewStylus ACP302 stylus that supports other touch-screens and laptops compatible with the MPP and supports 4,096 pen pressure, allowing you to easily edit and annotate your document. Also, ViewStylus ACP302 can be used with commonly used educational and business applications such as OneNote, Microsoft oce, Adobe Suite, Drawboard, and more.


Charge Interface:	Type-C
Power Saving:	Auto shutdown in 3 minutes when standby
Power Life:	100 hours
Length:	167 mm
Diameter:	Ø 9 mm
WEIGHT:	14.5g

Spec Table		ID2456	ID1330
Model			
LCD PANEL	Screen Size	527.04 x 296.46 mm (23.8" TFT LCD)	293.76 X 165.24 mm
	Resolution	1920 x 1080	1920 x 1080
	Contrast Ratio	1000:1	800:1(Min) 1000(Typ)
	Brightness	250 cd/m2	300 cd/m2
	Response Time	14 ms	30 ms
	Viewing Angles	H:178° / V:178°	H:170° / V:170°
	Displayable Colors	16.7 M (24 bits)	16.7 M (8 bits)
	Backlight	LED Light-Bar	LED Light-Bar
	Surface Treatment	6H tempered glass	8H tempered glass
CONNECTOR	HDMI	HDMI IN x 1 / HDMI OUT x 1	Mini HDMI x 1
	Type-C/ VGA / DVI / DP	Type-C x 1 (Power Delivery 90W, DP1.2, USB3.0) / VGA x 1	Type-C x 2
	Audio	3W x 2	N/A
	USB	USB3.0 (A) x 2 / USB3.0 (B) x 1	N/A
	Power Input	AC 100-240V ; 50/60Hz	5V/3A
INTERACTIVITY	Pen Solution	MPP2.0 (Microsoft Pen Protocol)	EMR
	Pen Resolution	N/A	5,080 LPI
	Pen Report Rate	266 PPS	266 PPS
	Pen Pressure Level	4,096	8,192
	Pen Encryption	N/A	N/A
	Finger Touch	Yes, 10 Points	N/A
ERGONOMICS	Pen Tilt Angle	±50°	±60°
	Stand Tilt Angle	15° - 70°	15°
COMPATIBILITY	PC	Windows 7,8,1,10	Windows 7,8,10
	Mac	Power Mac tested, Finger Touch MacOS support Big Sur (install vTouch)	To Mac OS 10.15
	Chrome Book	Finger Touch MacOS support Big Sur (install vTouch)	Yes
	Android	TBD	Yes
POWER	Voltage	AC 100 – 240 V	USB-C 5V
	Consumption	33W (Typ.)/ 36W (Max.)	3W(Typ.)/ 5W(Max.)
OPERATING CONDITIONS	Temperature (° F / ° C)	32°F to 104°F (0-40°C)	32°F to 104°F (0-40°C)
	Humidity	20%-90% (Max), Non-Condensation	20%-80%(Max), Non-Condensation
DIMENSIONS W x H x D	Physical	544.6 X 333.1 X 43.3 mm	344 x 210 x 7 mm
	Box	645 X 125 X 410 mm	360 x 274 x 76 mm
WEIGHT	Net	5.0 kg	0.82kg
	Gross	7.7 kg	1.5kg
VESA Mount		Yes (100 X 100 mm)	N/A

Spec Table		PF0730-I0WW	ID710-BWW
Model			
LCD PANEL	Screen Size	162.6 x 101.6 mm (Working Area)	152.21 x 85.92 mm (7" TFT LCD)
	Resolution	N/A	1024 x 600
	Contrast Ratio	N/A	800:1 (Typ.)
	Brightness	N/A	Typ. 150cd/m2 (with glass)
	Response Time	N/A	25ms
	Viewing Angles	N/A	H:150° / V:145°
	Displayable Colors	N/A	16.7 M (8 bits)
	Backlight	N/A	LED Light-Bar
	Surface Treatment	N/A	8H tempered glass
CONNECTOR	HDMI	N/A	N/A
	Type-C/ VGA / DVI / DP	N/A	Type-C x 1
	Audio	N/A	N/A
	USB	Micro USB	N/A
	Power Input	5V/40mA	USB-C: 5V/0.6A (Typ.)
INTERACTIVITY	Pen Solution	EMR	EMR
	Pen Resolution	5,080 LPI	5,080 LPI
	Pen Report Rate	250 PPS	250 PPS
	Pen Pressure Level	4,096 levels	8,192 levels
	Pen Encryption	N/A	N/A
	Finger Touch	N/A	N/A
ERGONOMICS	Pen Tilt Angle	N/A	±60°
	Stand Tilt Angle	N/A	N/A
COMPATIBILITY	PC	Windows 7 and above	Windows 7,8,10
	Mac	macOS 10.15 and above	macOS 10.15 or above
	Chrome Book	Yes	Yes
	Android	Yes	Yes
POWER	Voltage	5V	USB-C 5V
	Consumption	0.2W (Typ.)	3W (Typ.)
OPERATING CONDITIONS	Temperature (° F / ° C)	32°F to 104°F (0-40°C)	32°F to 104°F (0-40°C)
	Humidity	30%-80% (Max), Non-Condensation	20%-80%(Max), Non-Condensation
DIMENSIONS W x H x D	Physical	200 x 170 x 7.5 mm	212.1 x 141.1 x 21.8 mm
	Box	265 x 225.5 x 40mm	272 x 201 x 67 mm
WEIGHT	Net	0.165 kg	0.352 kg
	Gross	0.429 kg	0.59 kg
VESA Mount		N/A	N/A

Spec Table	STND-060 (For ID2456)
Model	
Weight Range	5kg
Mounting	VESA 100 x 100 mm
Pitch Angle	-5°-+60°
Dimensions(Physical)	286x205x327 mm
Dimension Bulk	275x213x380 mm
Operating Condition	Temperature Humidity 0°C to 40°C, 20% to 80% (non-condensing)
Storage Condition	Temperature Humidity 20°C to 28°C, 40% to 70% (non-condensing)
Included Accessories	1.Stand x 1 2.Nylon Clasp Buckle x 1
Net Weight (lbs)	2.758 kg/6.08 lb
Unit Weight (lbs)	3.242 kg/7.55 lb

Spec Table		ACP501	ACP302-B1WW
Model			
INTERACTIVITY	Pen Solution	Echo/Active Capacitive	Active Capacitive Pen for MPP 2.0
	Pen Pressure Level	N/A	4,096 Levels
ERGONOMICS	Pen Tilt Angle	N/A	±50°
	Palm Rejection	Yes	Yes
Bluetooth Pairing	Bluetooth Pairing	No (Out of the Box)	No (Out of the Box)
COMPATIBILITY	Compatibility	1. Windows (Performance depends on devices) 2. Chrome Book (Performance depends on devices) 3. Android (Performance depends on devices) 4. macOS(iPad): iPad / iPad Pro after year 2018 iPad Pro 12.9-inch (3,4,5th generation) iPad Pro 11-inch (1st, 2nd,3rd generation) iPad (6,7,8,9th generation)) iPad Air (3rd,4,5th generation) iPad mini (5,6th generation)	Windows
POWER	Charging Port	Type-C	Type-C
	Battery Life	iPad Mode 11.5 hrs. / Universal Mode 10.5 hrs.	100 hrs
	Power Saving	Auto shutdown in 5 minutes when standby	Auto shutdown in 3 minutes when standby
Magnetic Attachment	Magnetic Attachment	Yes	Yes
OPERATING CONDITIONS	Temperature (° F / ° C)	32°F to 104°F (0-40°C)	32°F to 104°F (0-40°C)
	Humidity	30%-80%	35%-85%
DIMENSIONS W x H x D	Physical	166 mm x Ø9 mm	167 ± 0.5 mm x Ø 9 mm
	Box	210.9 x 68 x 21 mm	190 x 33 x 18mm
WEIGHT	Net	14g	14.5g
	Gross	65g	70g

Spec Table		EMP022
Model		
INTERACTIVITY	Pen Solution	EMR Technology
	Pen Pressure Level	4,096 Levels
ERGONOMICS	Pen Tilt Angle	±60°
	Palm Rejection	N/A
BLUETOOTH PAIRING	Bluetooth Pairing	No (Out of the Box)
COMPATIBILITY	Compatibility	ViewSonic Pen Display
POWER	Charging Port	Battery free
	Battery Life	Battery free
	Power Saving	N/A
Magnetic Attachment	Magnetic Attachment	N/A
OPERATING CONDITIONS	Temperature (° F / ° C)	32°F to 104°F (0-40°C)
	Humidity	30%-80%
DIMENSIONS W x H x D	Physical	153 mm x Ø 15mm
	Box	165 x 33 x 18 mm
WEIGHT	Net	13.9g
	Gross	21g

Schedule a Demo Today

Want to know more?

Let one of our experts walk you through the hybrid learning solution with a live demo.

About ViewSonic

ViewSonic has been an audio-visual leader worldwide for more than three decades. We firmly believe that we can partner with educators to achieve sustainable success and better learning outcomes.

Our considerable experience has taught us a great deal about the real-life challenges and needs of people we work with.



Proven track record

2000+

quality awards



Dedicated to innovation

80+

R&D Personnel worldwide



Global market leader

100+

countries worldwide



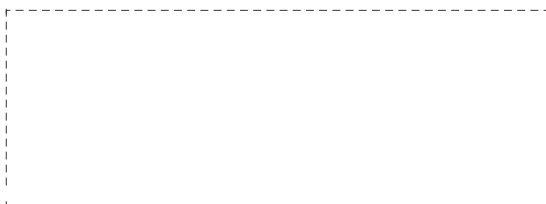
Established reputation

30

years of experience



Reseller Information



www.viewsonic.com



Global Headquarters: Brea, California, USA Regional
Headquarters: London, Taipei, Shanghai, & 46 offices worldwide
Products sold in over 100 countries



@ViewSonic