

Full HD LED HDMI Multimedia Ergonomic SuperClear® display

VG2233Smh



The ViewSonic VG2233Smh is a high-performance, ergonomic 22" (21.5" viewable) LED display that offers a cost-effective solution for corporations and SMBs, as well as educational and government institutions. Designed to offer a more efficient and comfortable working environment, it is fully ergonomic with 340° swivel, 90° pivot, -5° to 25° tilt, and 100mm height adjustment. Along with the SuperClear® image enhancement technology for lifelike colour performance and 178/178° wide viewing angles, the VG2233Smh boasts Full HD 1920 x 1080 resolution and colour management to deliver consistently brilliant colour performance at any angle. With HDMI, DVI and D-Sub inputs to connect high-definition devices, the display also integrates dual stereo 2W speakers to provide the total multimedia package. An integrated Eco-mode lets users optimize the backlight level, lowers power consumption and prolong the lamp life for a lower total cost of ownership - making the VG2233Smh the best choice for your organization.



Full HD 1080p for Superior Pixel Performance

The ViewSonic VG2233Smh features Full HD 1920 x 1080 resolution for excellent pixel-by-pixel image performance. Experience the most amazing clarity and detail whether it be while gaming or enjoying the latest in multimedia entertainment. A 16:9 widescreen ratio minimizes eye fatigue even after hours of playtime, and is perfectly compatible with multi-window viewing without toggling.



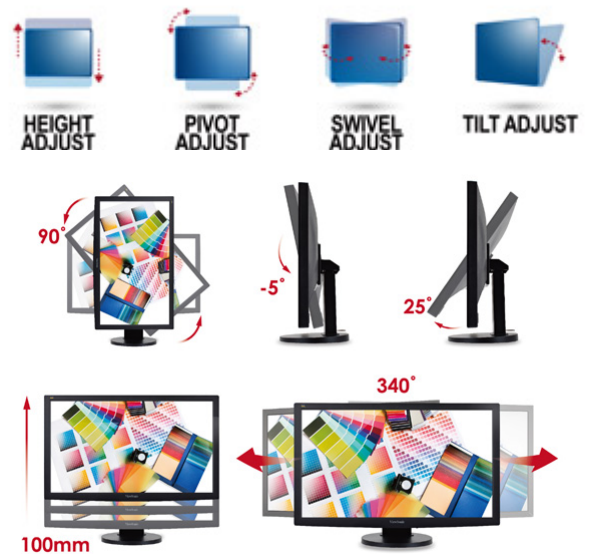
SuperClear® Image Enhancement Technology with wide viewing angles

SuperClear® Image Enhancement Technology delivers the best colour performance and 178 degrees viewing angle both horizontally and vertically. Experience accurate and vivid colours with consistent levels of brightness whether looking at the screen from above, below, the front, or the side—with no colour distortion or decay.



Ergonomic Designs Made for Comfort and Productivity

ViewSonic's VG2233Smh is ergonomically designed to offer users the flexibility they need to increase their productivity - and comfort. Design features include 340° swivel, 90° pivot, 0-100mm height, and -5° to 25° tilt adjustments, allowing the screen a greater range of movement.





Energy-Saving LED Backlight

The VG2233Smh utilises an energy-saving LED backlight that consumes less power than conventional CCFL backlight displays, and has an extended lifespan of up to 30,000 hours. This provides for a lower overall cost of ownership, along with a higher ROI, making this display a great long-term investment.



Eco-mode conserves more energy and cuts costs

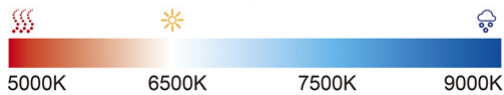
ViewSonic's proprietary Eco-mode energy-saving feature is built into all LED displays, offering "Optimize (75%)" or "Conserve (50%)" settings that save up to 50% in electricity costs and prolongs lamp life. In low ambient light, Eco-mode adjusts brightness and improves visibility, while reducing eye fatigue.





Better colour accuracy with colour management

ViewSonic's built-in colour management system maintains strict standards for colour temperature and white balance correction to ensure the most accurate white level for image rendering. Different OSD colour settings (Bluish, Cool, Native, Warm) allow you to match different colour temperature settings. Calibrated to be 100% consistent from screen-to-screen, each monitor displays the exact same colours and sRGB settings as your original HD-device source images.



HDMI for Full HD Content Connectivity

ViewSonic VG2233Smh is equipped with HDMI input for high definition audio and video connectivity to PC, laptop and multimedia entertainment devices.





Dual integrated stereo speakers

The ViewSonic VG2233Smh has two integrated 2W stereo speakers for enhanced multimedia performance with crystal-clear stereo sound.



Filtro de luz azul para una visualización más cómoda

La exposición prolongada a determinados niveles de luz azul puede causar molestias en los ojos. Los monitores de ViewSonic cuentan con un ajuste de filtro de luz azul que permite a los usuarios ajustar la cantidad de luz azul que emite la pantalla, lograr un buen equilibrio de color y reducir las molestias en los ojos en aplicaciones multimedia y de trabajo.



VESA-Mountable

The ViewSonic VG2233Smh features a 100 x 100mm VESA-mountable design that allows you to mount the display on a monitor stand, mounting bracket or on a wall.



Visualización sin parpadeo de ViewSonic para un mayor confort ocular

Los monitores, dotados de la tecnología Flicker-Free de ViewSonic eliminan por completo el parpadeo y cumplen la promesa de ofrecer una visualización más cómoda. Esto le permite trabajar en su equipo, jugar o ver películas durante más tiempo sin fatiga ocular.



Normal



ViewSonic Flicker-Free Technology

Ajuste del color

El sistema de gestión de color incorporado de ViewSonic mantiene normas estrictas para la temperatura de color y la corrección de balance de blancos para garantizar el nivel de blancos más exacto para la representación de la imagen. Los diferentes ajustes de color OSD (azulado, fresco, nativo, caliente) le permiten seleccionar la temperatura de color que desee en la pantalla.



Rendimiento del pixel garantizado + Garantía limitada a 3 años

Uno de los aspectos que convierten a ViewSonic en líder de mercado de soluciones de visualización es su dedicación a la calidad. ViewSonic se compromete a utilizar los paneles de más alta calidad y ofrece un rendimiento de pixel líder de la industria.

Rendimiento del pixel	Monitores LED
ISO9241-3: 2008 Standard	2 Brillo 2 Oscuro 5 Total
Garantía ViewSonic Pixel	2 Brillo 2 Oscuro 3 Total

Technical Specifications

LCD	Tipo	22" 16:9 (21.5" viewable) Colour a-Si TFT Active Matrix LCD (ADS)
	Ratio de contraste	1000:1 (typ)
	Ángulos de visión	178° / 178° (typ)
	Área de visualización	476.64(H) X 268.11 (V)mm
	Resolución óptima	1920 x 1080
	Tiempo de respuesta	4ms (GtG)
	Superficie del panel	Anti-Glare
	Gama de colores	16.7M

Brillo	250 cd/m2
Relación de contraste dinámico	20M:1
Retroiluminación	WLED light bar
Vida útil de retroiluminación	30,000 Hrs

Dimensiones	Físicas con la base	505.6 x 361 x 204.3 mm
	Físicas sin la base	505.6 x 311.6 x 51 mm
	Embalaje	624 x 393 x 167 mm

Normativas	CU, UkrSEPRO + DoC,Erp, REACH SVHC List & DoC, TCO
-------------------	--

CONTENIDO DE LA CAJA	LCD Display, Power Cable, VGA cable, DVI cable, Audio cable, Quick Start Guide, ViewSonic Wizard CD-ROM
-----------------------------	---

SEÑAL DE ENTRADA	Analógico	VGA
	Digital	HDMI / DVI

Conectividad	Video	VGA x1, DVI x1, HDMI x1
	Salida de audio	3.5mm Headphone Out
	Entrada de audio	3.5mm Connector
	Speaker	2-Watt x 2
	Alimentación	Internal Power Board, 3-pin plug (CEE22)

Alimentación	Conservación	14 W (typ)
	Optimización	18 W (typ)
	Voltaje	AC 100-240V (Universal); 50/60 Hz
	Consumo	22 W (typ)

VESA® MONTAJE	100 x 100 mm
----------------------	--------------

ERGONOMÍA	Ajuste de altura	100 mm
	Pivote	90º
	Inclinación	25º ~ - 5º
	Giratoria	340º

Peso	Bruto	4.8 Kg
	Neto con base	3.2 Kg
	Neto sin base	6.27 Kg

CONDICIONES DE FUNCIONAMIENTO	Temperatura	0°C ~ 40°C
--------------------------------------	-------------	------------

ViewSonic® Limited Warranty

ViewSonic provides customers with the security of a manufacturers warranty against defected products. The type and duration of the applicable warranty service varies by product type, country of purchase and can also vary on an individual basis according to customer requirements agreed at time of purchase. The warranty will expire after the end of the warranty period.

For more product information, visit us at **www.viewsoniceurope.com**

All rights reserved by ViewSonic Corporation. All other Corporate names and trademarks are the property of their respective companies. E&EO. All prices and specifications are subject to change without written notice. Images are for illustrative purpose only. Terms & Conditions Apply.