

ViewSonic® | **ELITE**

ViewSonic Elite Monitor
Razer Chroma Synapse 3
RGB Setup GUIDE



Getting Started

TABLE OF CONTENTS

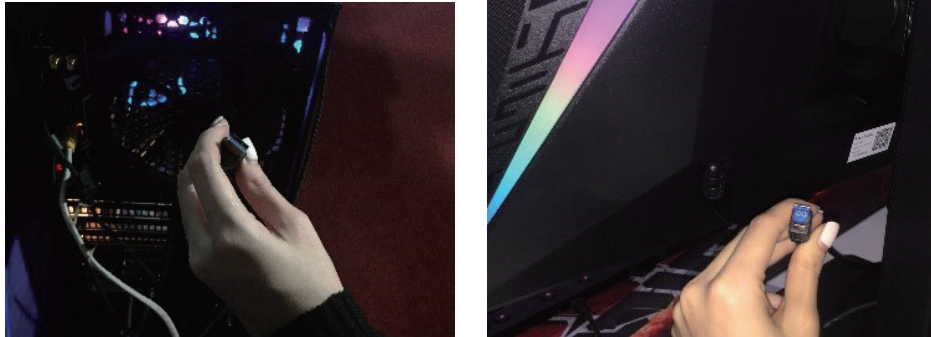
Activating your monitor's RGB.....	1
What You Need.....	1
Downloading Razer Synapse 3.....	2
Syncing Your Monitor to In-Game Profiles	3
Additional Information.....	4

Activating your monitor's RGB

1. Plug in the USB 3.0 cord into the monitor and PC.

Type-A (rectangle) plugs into the PC.

Type-B (square) plugs into the monitor.

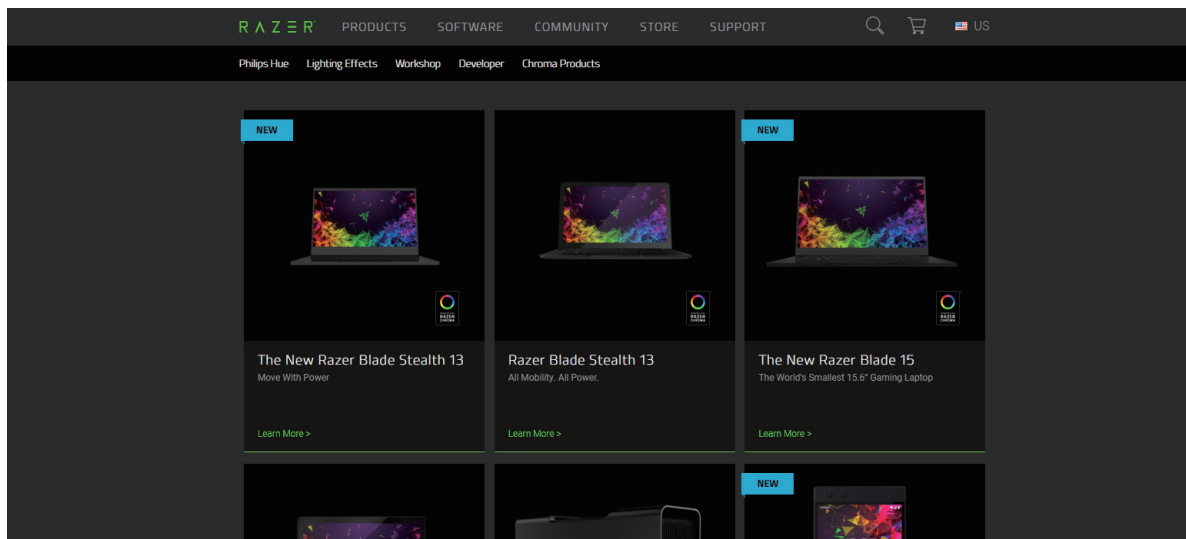


2. Using the OSD control button on the monitor, navigate to the Setup Menu and turn "ELITE RGB" on. Now you are ready to download the software.

What You Need

To use Razer Chroma with your ViewSonic Elite RGB gaming monitor you need at least one Razer Chroma supported device. You can find a full list of compatible devices at the following link:

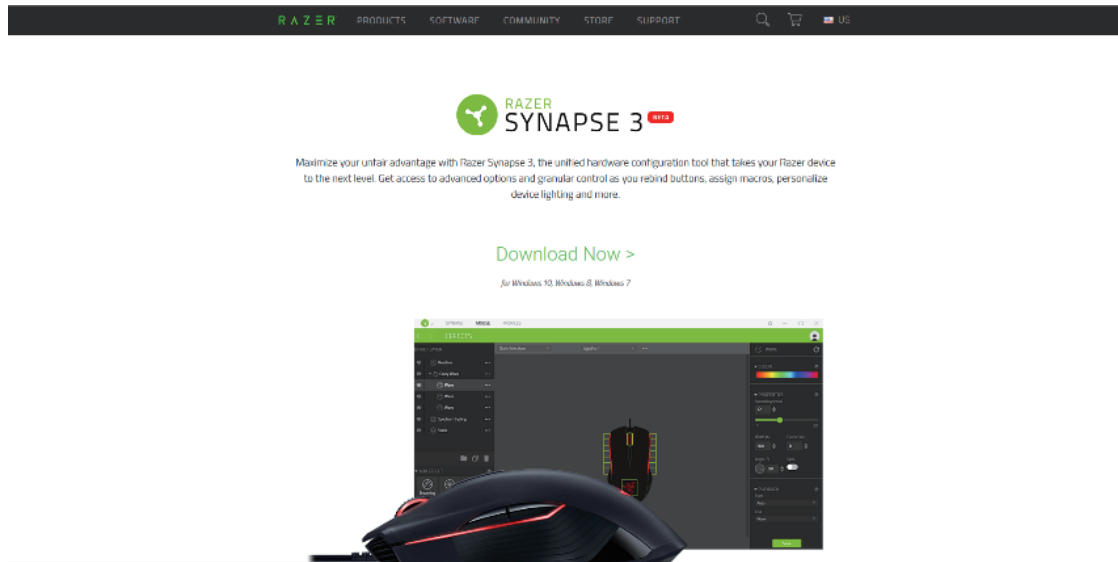
http://drivers.razersupport.com/index.php?_m=downloads&_a=viewdownload&downloaditemid=2731&nav=0,343,704



Downloading Razer Synapse 3

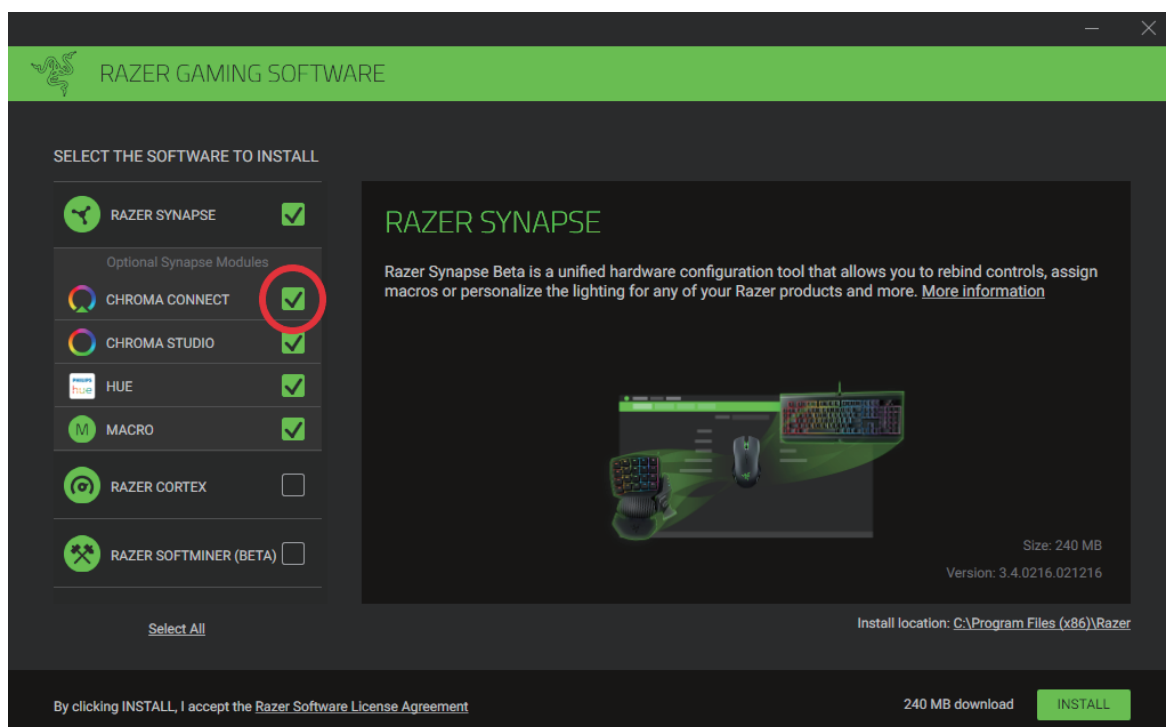
After you connect your Razer Chroma supported device and ViewSonic Elite gaming monitor, download Razer Synapse 3 by following the steps below:

1. Go to www.razer.com/synapse-3

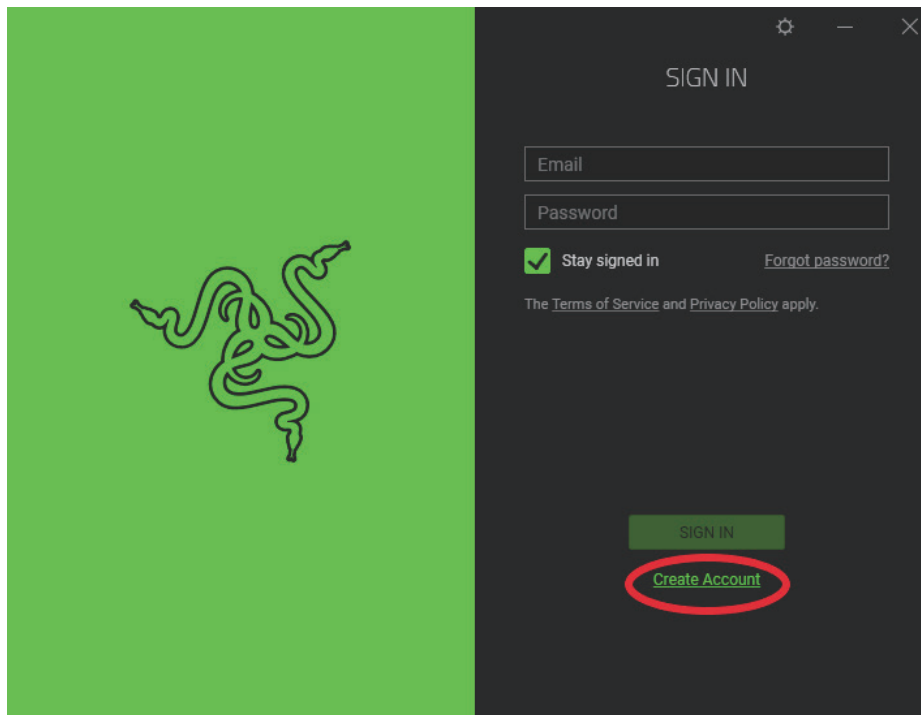


2. Click "Download Now".

* ATTENTION! Make sure the box for "CHROMA CONNECT" is also selected before downloading Razer Synapse. This is necessary to connect your monitor.

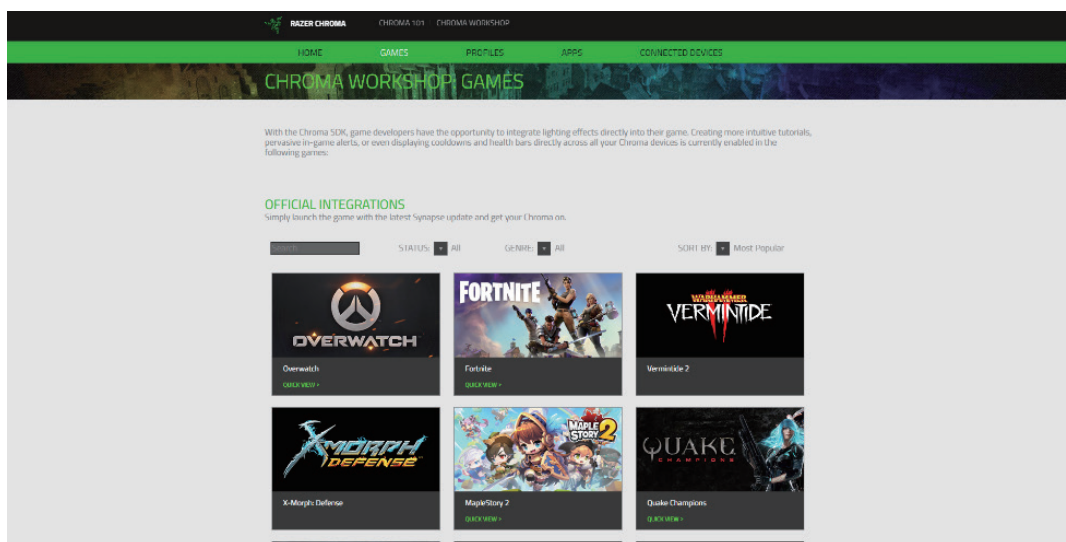


3. After launching the software, create a user profile and activate the profile from your email.

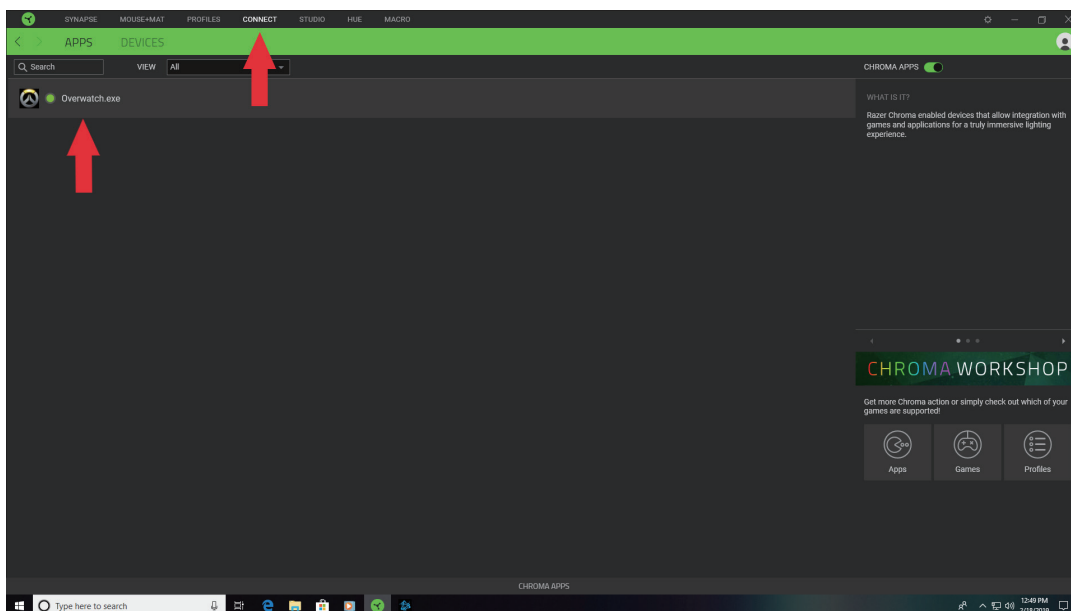


Syncing Your Monitor to In-Game Profiles

Once you have created your account, your monitor will be able to activate the in-game profiles of over 135 major game titles created by leading game developers. To view the full list of compatible games, go to <https://www2.razer.com/chroma-workshop/games>.



1. Start one of the select games with an available in-game profile featured in the Chroma Workshop.
2. In Razer Synapse, click the “Connect” tab at the top of the program to view the connected game. See Overwatch connected in the example below.



3. During gameplay, your monitor’s RGB will perform the integrated lighting effects of the in-game profile for your selected game. RGB lighting effects will vary depending upon the game title.

Additional Information

For more information about Razer Chroma, please visit <https://www.razer.com/chroma>.



ViewSonic® | ELITE